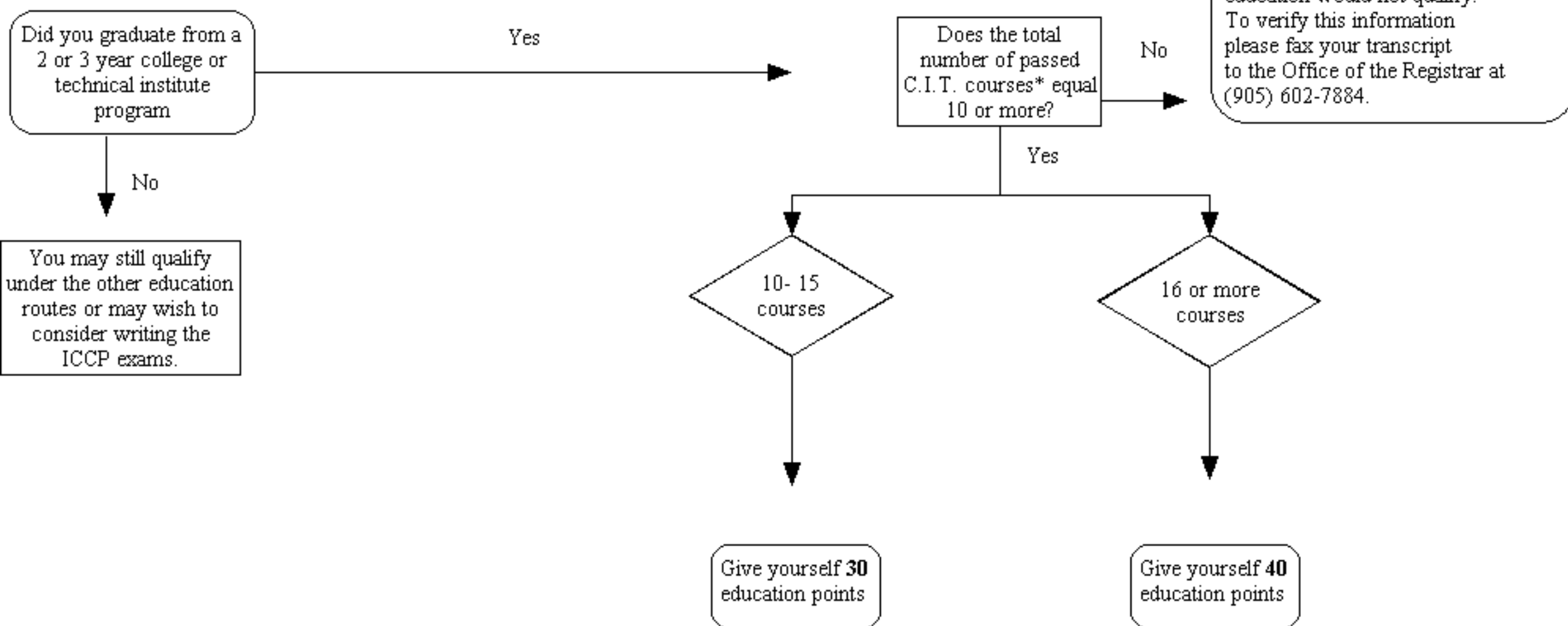


Graduates from a **publicly funded** 2 or 3 year college/technical institute program
(Before you start, have your educational transcripts before you)

START



* Courses must have a passing grade to be counted. C.I.S./C.S.T. type courses are those designated as such. Only courses with I.T. content can be counted. Soft skill courses such as Communications, Marketing, Statistics etc. that are marked by the institution as a "C.I.S./C.S.T. type course" **CANNOT** be counted.